

ESTATE
360



A letter from your future *home*.

CONSTRUCTION UPDATE
OCTOBER 2025

Max Estates — a *well-being* company enabled by real estate.

At Max Estates, your well-being is at the core of our ideology. We call this our philosophy of *LiveWell & WorkWell* — a vision to positively enhance every life we touch. Through meticulous attention to every aspect of wellness, we bring you a unique confluence of spaces that enable holistic well-being.

Physical well-being

Design features that promote movement and good health, such as minimal vehicular circulation and an abundance of sports amenities.

Emotional well-being

Lush greens, spaces for rejuvenation and ready access to daily conveniences, for your peace of mind.

Environmental well-being

An eco-conscious approach to design at every step, from sourcing to execution, for your long-term well-being.

Social well-being

Amenities and spaces for engagement and interaction, to bring you a sense of belonging within a community.



A home where well-being begins with *we*.

Max Estates' guiding philosophy of well-being now comes to Gurugram with Estate 360 — the first intergenerational residential community of its kind in Delhi NCR.

Located in Sector 36A-Dwarka Expressway, Gurugram, Estate 360 is thoughtfully designed to bring people together through a deep understanding of generational needs.

Offering inclusive spaces and a curation of amenities for your emotional, physical, social and environmental well-being, Estate 360 is a home for *every* need and *every* generation.

Our newest LiveWell experience offers...

11.8
acres

of intentional
design

700
trees

across the estate

6
residences

including 2 residences
for senior living

60+
amenities

catering to
your well-being

1 laq
sq. ft.

of amenities

ESTATE
360

 **MAX**
ESTATES

A home that has something for *everyone*.



Experience our LiveWell philosophy come *alive*

Visit our Estate 360 Experience Centre and newly opened show apartment to see how thoughtful design, natural light, and well-crafted spaces come together to bring the LiveWell philosophy to life.



One step closer to LiveWell

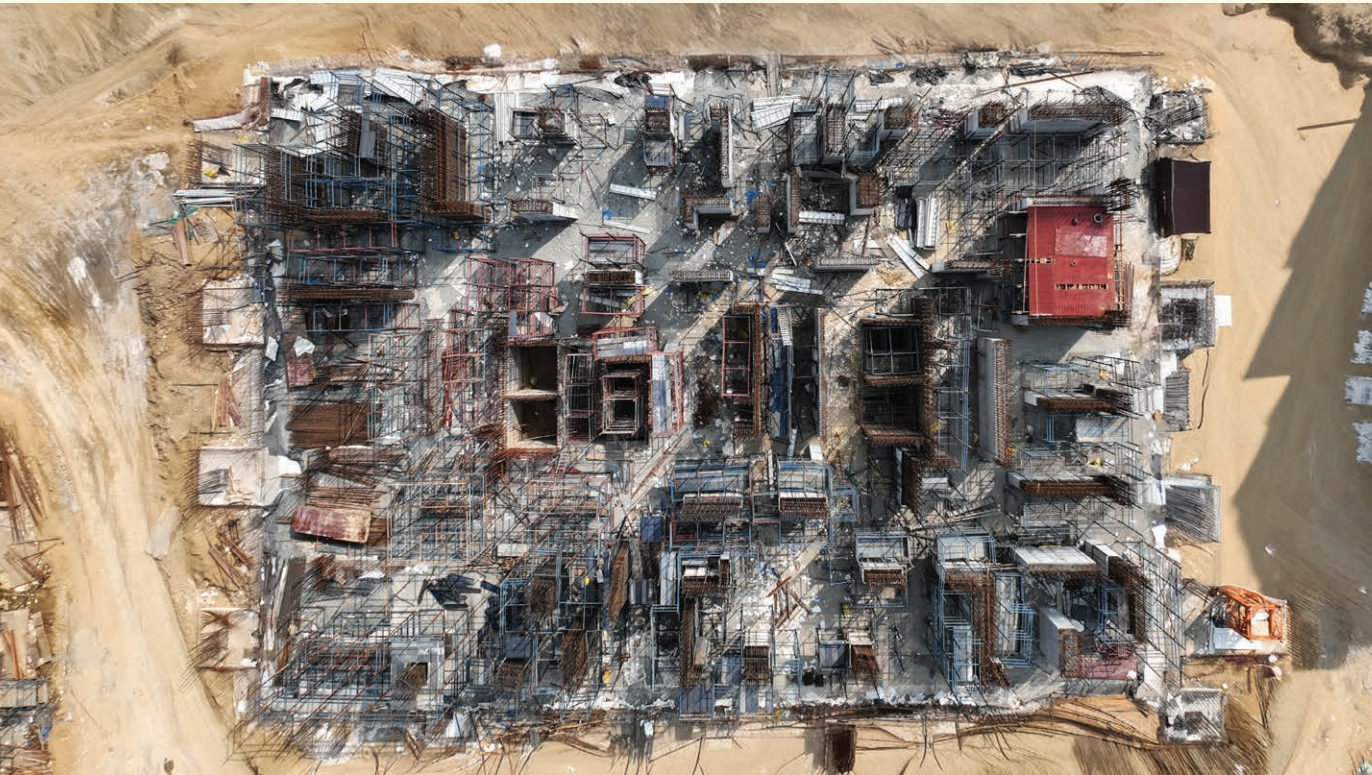
Residence 1

The RCC column work is in progress at basement level II.



Residence 2

The RCC slab work is in progress at basement level II.



AERIAL VIEW



Residence 3

The RCC column work is in progress at basement level I.



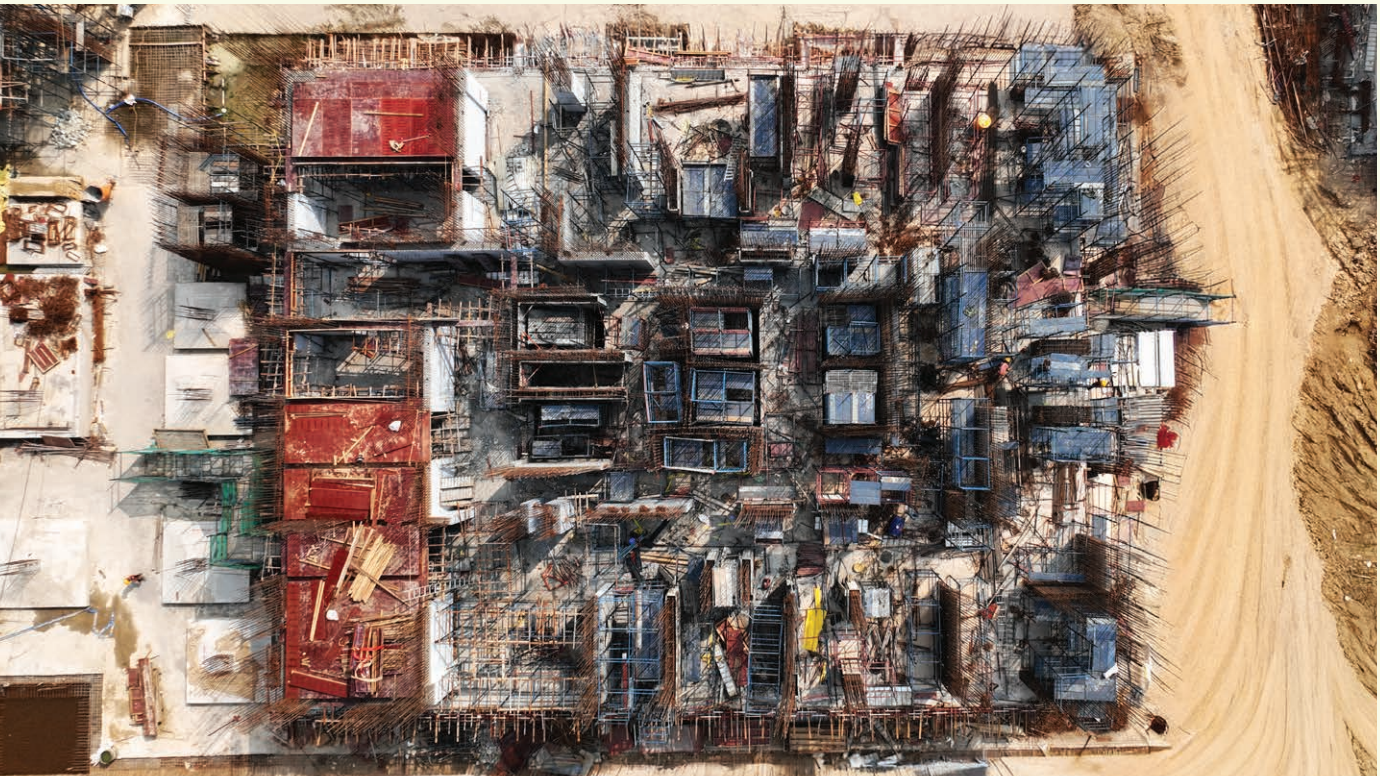
Residence 4

The RCC column work is in progress at the ground floor.



Residence 5

The RCC slab work is in progress at basement level I.



Residence 6

The RCC column work is in progress at the ground floor.



AERIAL VIEW

‘Pulse’ socials breathing life into our LiveWell experiences

By combining excellent hospitality with communal experiences, comforts, technology, and design, we hope to create a space where you can live more at work and do more at home. Our in-house vertical, Pulse, ensures our developments are always pulsing with life, with engagement driven activities curated by dedicated culture managers. We fulfil the “WorkWell and LiveWell” promise by giving life to a building and nurturing its occupants to be healthier and happier.



P U L S E



ESTATE
360

MAX
ESTATES

Our presence across Delhi-NCR



* This is a proposed residential development which is under the planning stage. No sale or renting is presently being undertaken at this project.

** These are the proposed commercial developments which are under the planning stage. No sale or renting is presently being undertaken at these proposed projects.

ESTATE
360



Sustainably Yours

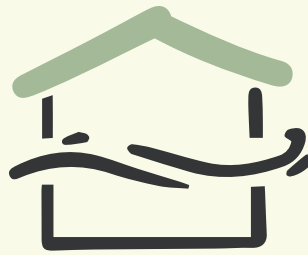
As an IGBC Platinum Pre-certified project — the highest possible certification awarded to a development — we proudly achieve the exceptional standards of energy efficiency, water efficiency, material selection and waste management set by the Indian Green Building Council.



PRE-CERTIFICATION



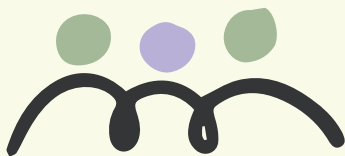
Water reuse
and recycling
practices



Air quality
enhancement systems



Energy efficiency
through smart
home integration



Community
sustainability
programs



Eco-conscious
construction practices



Effective waste
management system

ESTATE 360

The Project 'Estate 360' is registered with the HARERA with registration no. RC/REP/HARERA/GGM/860/592/2024/87. Please refer to project details on the website of HARERA <https://haryanarera.gov.in> prior to making any decision. The promoter of Estate 360 is Max Estates Gurgaon Ltd. (CIN no. U70109UP2022PLC170197) having its Registered office at Max Towers, C-001/A/1, Sector- 16B, Gautam Buddha Nagar, Noida, UP 201301. This is not an offer, an invitation to offer and/or commitment of any nature. The images include artistic impressions and stock images. The details of the Project, Apartment/Unit including but not limited to designs, dimensions, cost, facilities, plans, images, specifications, furniture, accessories, paintings, iterns, electronic goods, additional fittings/fixtures, decorative items, are only indicative in nature and are only for the purpose of illustrating/indicating a possible layout and may not form part of the standard specifications/amenities/services to be provided in the Project, Apartment/Unit. Intending buyers are advised to use their discretion in relying on the information/amenities described/shown therein. All specifications of the Project, Apartment/Unit shall be as per the documents/information uploaded by the company on the website of HARERA and the agreement between the parties.

1 sq. mtr. is equal to 10.76 sq. ft. | 1 acre is equal to 4046.86 sq. mtr.